



MONTHLY SUMMARY OF STATISTICS

VICTORIA

EMBARGO: 11:30AM (CANBERRA TIME) THURS 22 APR 1999

CONTENTS

	<i>page</i>
Notes	2
Selected features	3
TABLES	
List of tables.....	4
Demography.....	5
Labour.....	6
Wages.....	9
Prices.....	10
Meat production.....	11
Building.....	12
Finance.....	15
Retail.....	16
Trade.....	17
Tourism.....	18

- For more information about these and related statistics, contact Information Services on 03 9615 7755 or refer to the back cover of this publication.

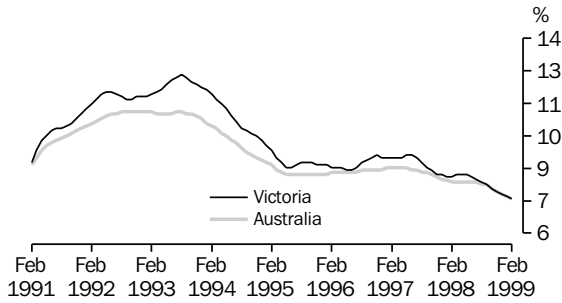
NOTES

FORTHCOMING ISSUES	<table border="0"> <thead> <tr> <th style="text-align: left;"><i>ISSUE</i></th> <th style="text-align: left;"><i>RELEASE DATE</i></th> </tr> </thead> <tbody> <tr> <td>April 1999</td> <td>21 May 1999</td> </tr> <tr> <td>May 1999</td> <td>21 June 1999</td> </tr> <tr> <td>June 1999</td> <td>22 July 1999</td> </tr> <tr> <td>July 1999</td> <td>20 August 1999</td> </tr> <tr> <td>August 1999</td> <td>22 September 1999</td> </tr> <tr> <td>September 1999</td> <td>22 October 1999</td> </tr> </tbody> </table>	<i>ISSUE</i>	<i>RELEASE DATE</i>	April 1999	21 May 1999	May 1999	21 June 1999	June 1999	22 July 1999	July 1999	20 August 1999	August 1999	22 September 1999	September 1999	22 October 1999				
<i>ISSUE</i>	<i>RELEASE DATE</i>																		
April 1999	21 May 1999																		
May 1999	21 June 1999																		
June 1999	22 July 1999																		
July 1999	20 August 1999																		
August 1999	22 September 1999																		
September 1999	22 October 1999																		
ABOUT THIS PUBLICATION	<p>The aim of this publication is to provide a range of the latest statistics available at the end of each month of issue. Consequently, the dates and periods shown are not always the same for each table, but are in each case the latest figures available at that time.</p>																		
SEASONAL ADJUSTMENT	<p>Seasonal adjustment is a means of removing the estimated effects of normal seasonal variations from economic time series so that the effects of other influences are obvious. Seasonal variations are the systematic (though not necessarily regular) intra-year movements of economic time series. These are often the result of non-economic phenomena, such as climatic changes and regular religious festivals e.g. Christmas and Easter.</p>																		
TREND ESTIMATE	<p>Smoothing seasonally adjusted series produces a measure of trend by removing the impact of the irregular component of the series. The trend estimates are derived by applying a 13-term Henderson weighted moving average to the respective seasonally adjusted series. Readers are reminded that trend estimates are subject to revision as subsequent months' data become available.</p>																		
CHANGES IN THIS ISSUE	<p>Every five years, the ABS revises Labour Force Survey estimates to incorporate revisions to population estimates obtained from the Census of Population and Housing. The revision process coincides with the annual reanalysis of seasonal factors which occurs in February each year. All Labour Force estimates have been revised from January 1995 to reflect revisions arising from the 1996 Census, and the seasonally adjusted and trend estimates have been revised from February 1978 to reflect the seasonal reanalysis. More details appear in <i>Labour Force, Australia, February 1999</i> (6203.0).</p>																		
SYMBOLS AND OTHER USAGES	<table border="0"> <tr> <td>n.a.</td> <td>not available</td> </tr> <tr> <td>n.e.c.</td> <td>not elsewhere classified</td> </tr> <tr> <td>n.p.</td> <td>not available for publication but included in totals where applicable</td> </tr> <tr> <td>n.y.a.</td> <td>not yet available</td> </tr> <tr> <td>p</td> <td>preliminary—figure or series subject to revision</td> </tr> <tr> <td>r</td> <td>figure or series revised since previous issue</td> </tr> <tr> <td>*</td> <td>estimate has a relative standard error greater than 25% and is therefore subject to sampling variability too high for most practical uses</td> </tr> <tr> <td>. .</td> <td>not applicable</td> </tr> <tr> <td>—</td> <td>nil or rounded to zero</td> </tr> </table>	n.a.	not available	n.e.c.	not elsewhere classified	n.p.	not available for publication but included in totals where applicable	n.y.a.	not yet available	p	preliminary—figure or series subject to revision	r	figure or series revised since previous issue	*	estimate has a relative standard error greater than 25% and is therefore subject to sampling variability too high for most practical uses	. .	not applicable	—	nil or rounded to zero
n.a.	not available																		
n.e.c.	not elsewhere classified																		
n.p.	not available for publication but included in totals where applicable																		
n.y.a.	not yet available																		
p	preliminary—figure or series subject to revision																		
r	figure or series revised since previous issue																		
*	estimate has a relative standard error greater than 25% and is therefore subject to sampling variability too high for most practical uses																		
. .	not applicable																		
—	nil or rounded to zero																		

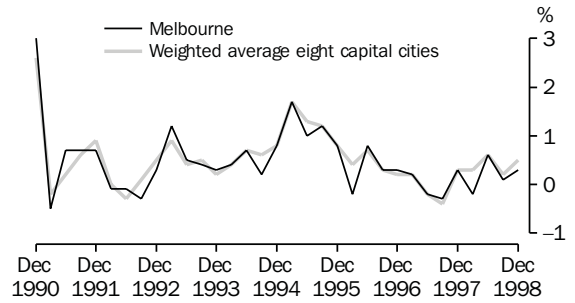
Zia ABBASI,
Regional Director, Victoria

SELECTED FEATURES

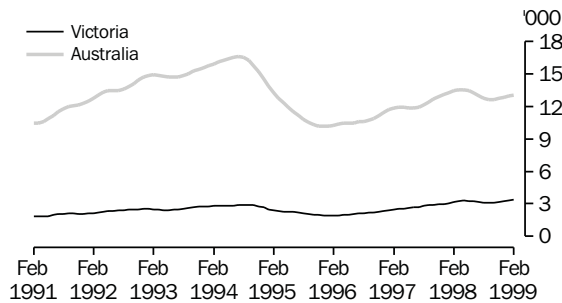
UNEMPLOYMENT RATE, Trend—Monthly



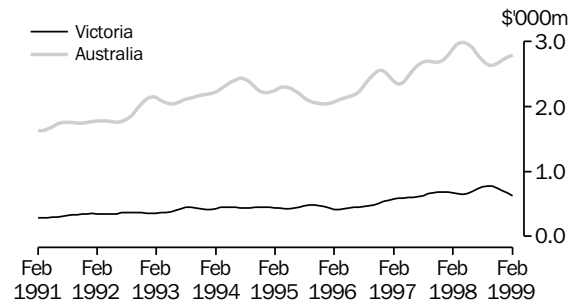
CONSUMER PRICE INDEX, Change from previous quarter



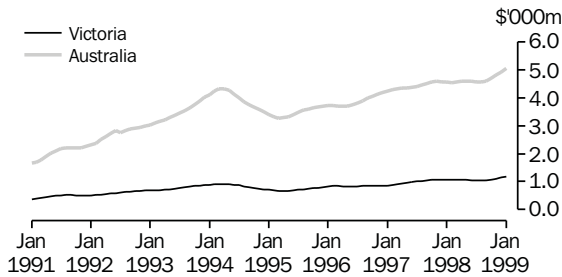
NEW DWELLING UNITS APPROVED, Trend—Monthly



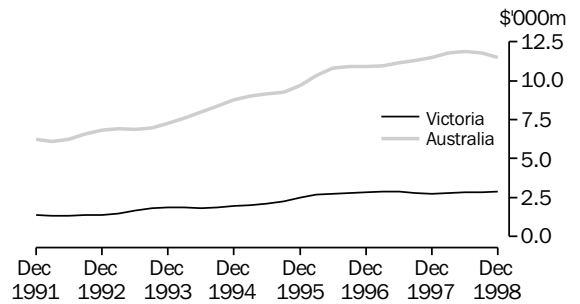
VALUE OF ALL BUILDINGS APPROVED, Trend—Monthly



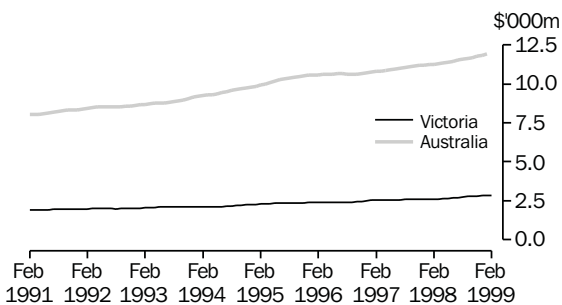
TOTAL VALUE OF SECURED HOUSING FINANCE COMMITMENTS TO INDIVIDUALS, Trend—Monthly



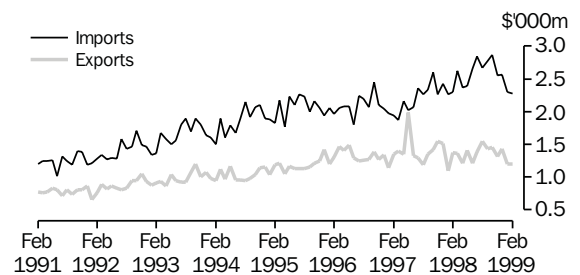
PRIVATE NEW CAPITAL EXPENDITURE, Trend—Quarterly



RETAIL TURNOVER, Trend—Monthly



MERCHANDISE IMPORTS AND EXPORTS, Original—Monthly



LIST OF TABLES

			Page
DEMOGRAPHY	1	Estimated resident population	5
	2	Births, deaths, marriages and divorces	5
LABOUR	3	Labour force status of the civilian population aged 15 years and over	6
	4	Employed persons, by industry	7
	5	Job vacancies	8
	6	Industrial disputes causing stoppage of work	8
	7	Average weekly earnings of employees	9
PRICES	8	Consumer Price Index—Melbourne	10
	9	Price Index of Materials Used in Building—Melbourne	10
MEAT PRODUCTION	10	Livestock slaughterings	11
	11	Meat production	11
BUILDING	12	Building approvals—Melbourne and Victoria	12
	13	New houses and other residential buildings, number of dwelling units	13
	14	Value of building	14
FINANCE	15	Private new capital expenditure, by selected industries and type of asset	15
	16	Commercial finance commitments	15
	17	Secured housing finance commitments, dwelling units	16
RETAIL	18	Retail turnover, by industry (excluding motor vehicles, parts, petrol, etc.)	16
TRADE	19	Exports and imports, by sections of the Australian Export and Import Classifications	17
	20	Overseas trade, major trading partners	17
	21	Value of overseas trade—Victoria and Australia	18
TOURISM	22	Tourist accommodation	18

1

ESTIMATED RESIDENT POPULATION

Period	At end of period			Increase during period		Melbourne Statistical Division at 30 June(a)
	Males	Females	Persons	Natural	Total	
	'000	'000	'000	'000	'000	'000
1995-96	2 252.6	2 307.5	4 560.2	28.5	42.8	3 283.3
1996-97	2 275.2	2 330.0	4 605.2	28.7	45.1	3 321.8
1997-98 p	2 303.7	2 357.2	4 660.9	28.8	55.7	3 371.3
1997						
March qtr	2 271.6	2 327.0	4 598.6	7.5	15.1	..
June qtr	2 275.2	2 330.0	4 605.2	6.8	6.6	..
September qtr p	2 282.1	2 336.7	4 618.7	6.4	13.5	..
December qtr p	2 286.8	2 342.1	4 628.9	7.7	10.2	..
1998						
March qtr p	2 298.0	2 352.1	4 650.1	7.8	21.2	..
June qtr p	2 303.7	2 357.2	4 660.9	6.9	10.8	..
September qtr p	2 310.9	2 364.1	4 674.9	6.4	14.1	..

(a) Based on the 1998 Statistical Local Area boundaries.

Source: Australian Demographic Statistics (Cat. no. 3101.0) (quarterly).

2

BIRTHS, DEATHS, MARRIAGES AND DIVORCES

Period	Registrations				Annual rate per 1,000 of mean estimated resident population				
	Births	Deaths (including infant deaths)	Marriages	Divorces	Births	Deaths	Marriages	Divorces	Infant deaths per 1,000 live births
	no.	no.	no.	no.	rate	rate	rate	rate	rate
1995-96	61 324	32 827	26 117	12 002	13.51	7.23	5.75	2.64	5.30
1996-97	61 232	32 570	25 664	13 046	13.36	7.11	5.60	2.85	4.46
1997-98 p	61 146	32 320	25 957	11 916	13.21	6.98	5.61	2.57	4.82
1997									
March qtr	14 941	7 472	8 101	2 810
June qtr	14 973	8 131	6 000	3 308
September qtr p	15 671	9 225	3 822	3 164
December qtr p	15 595	7 908	7 533	3 181
Year—1997 p	61 180	32 736	25 456	12 463	13.28	7.11	5.53	2.71	5.08
1998									
March qtr p	15 055	7 269	8 531	2 663
June qtr p	14 825	7 918	6 071	2 908
September qtr p	15 550	9 131	3 913	3 188

Source: Demography, Victoria (Cat. no. 3311.2) (annual), Australian Demographic Statistics (Cat. no. 3101.0) (quarterly).

3

LABOUR FORCE STATUS OF THE CIVILIAN POPULATION AGED 15 YEARS AND OVER

Month	Employed		Unemployed looking for work			Labour force	Not in labour force	Civilian population 15 years and over	Unemployment rate	Participation rate
	Full-time Total	Total	Full-time	Part-time	Total					
	'000	'000	'000	'000	'000	'000	'000	'000	%	%
MALES										
1997										
December	1 068.3	1 224.8	86.7	23.2	109.9	1 334.6	464.0	1 798.6	8.2	74.2
1998										
January	1 058.8	1 190.6	102.1	20.4	122.5	1 313.1	487.6	1 800.7	9.3	72.9
February	1 069.0	1 207.2	96.3	20.7	116.9	1 324.2	478.6	1 802.8	8.8	73.5
March	1 059.9	1 211.6	97.6	19.4	116.9	1 328.5	476.3	1 804.8	8.8	73.6
April	1 065.0	1 217.8	90.3	18.4	108.7	1 326.5	480.4	1 806.9	8.2	73.4
May	1 064.0	1 222.6	93.8	16.1	109.9	1 332.6	476.3	1 808.9	8.3	73.7
June	1 052.4	1 218.1	92.6	12.4	105.0	1 323.2	487.8	1 810.9	7.9	73.1
July	1 059.9	1 217.4	89.3	13.7	103.0	1 320.5	492.4	1 812.8	7.8	72.8
August	1 050.0	1 206.8	87.4	16.5	103.9	1 310.8	504.0	1 814.8	7.9	72.2
September	1 073.4	1 236.2	88.0	18.5	106.5	1 342.7	474.0	1 816.7	7.9	73.9
October	1 062.5	1 218.4	81.4	17.5	98.9	1 317.3	501.9	1 819.2	7.5	72.4
November	1 056.5	1 218.9	83.3	13.9	97.2	1 316.1	505.5	1 821.6	7.4	72.3
December	1 076.5	1 237.3	80.7	19.3	100.0	1 337.3	486.8	1 824.1	7.5	73.3
1999										
January	1 061.1	1 219.8	89.0	17.0	106.0	1 325.9	500.4	1 826.2	8.0	72.6
February	1 085.5	1 231.2	94.5	16.2	110.7	1 341.9	486.5	1 828.4	8.2	73.4
FEMALES										
1997										
December	532.3	939.5	55.6	26.6	82.2	1 021.7	859.0	1 880.7	8.0	54.3
1998										
January	515.1	897.6	61.1	28.8	89.8	987.4	895.2	1 882.6	9.1	52.4
February	528.5	917.9	63.1	27.9	91.0	1 008.9	875.7	1 884.6	9.0	52.4
March	521.8	929.6	61.2	32.8	94.0	1 023.5	863.0	1 886.5	9.2	53.5
April	533.1	941.7	57.4	29.0	86.3	1 028.0	860.5	1 888.5	8.4	54.3
May	524.2	939.0	55.2	24.5	79.6	1 018.6	871.8	1 890.4	7.8	54.4
June	524.3	945.7	53.1	30.8	83.9	1 029.6	862.8	1 892.3	8.1	53.9
July	536.9	944.8	54.0	29.0	83.0	1 027.8	866.5	1 894.3	8.1	54.4
August	537.9	954.2	50.4	31.0	81.4	1 035.7	860.6	1 896.3	7.9	54.3
September	535.2	957.8	58.2	32.0	90.2	1 048.0	850.2	1 898.2	8.6	54.6
October	530.6	942.7	47.3	27.1	74.4	1 017.2	883.4	1 900.6	7.3	55.2
November	520.1	941.0	49.8	27.2	77.0	1 017.9	885.0	1 902.9	7.6	53.5
December	543.7	954.0	48.4	27.0	75.4	1 029.4	875.9	1 905.3	7.3	54.0
1999										
January	533.9	915.4	52.2	24.0	76.2	991.6	915.7	1 907.2	7.7	52.0
February	531.6	929.5	54.6	32.1	86.7	1 016.2	893.0	1 909.2	8.5	53.2
PERSONS										
1997										
December	1 600.6	2 164.3	142.3	49.8	192.0	2 356.3	1 323.0	3 679.3	8.1	64.0
1998										
January	1 573.9	2 088.1	163.1	49.2	212.4	2 300.5	1 382.8	3 683.3	9.2	62.5
February	1 597.5	2 125.1	159.4	48.6	208.0	2 333.1	1 354.3	3 687.3	8.9	63.3
March	1 581.7	2 141.2	158.7	52.2	210.9	2 352.1	1 339.3	3 691.4	9.0	63.7
April	1 598.1	2 159.5	147.7	47.3	195.0	2 354.5	1 340.8	3 695.3	8.3	63.7
May	1 588.2	2 161.6	149.0	40.6	189.6	2 351.2	1 348.1	3 699.3	8.1	63.6
June	1 576.7	2 163.8	145.7	43.2	188.9	2 352.7	1 350.5	3 703.2	8.0	63.5
July	1 596.8	2 162.2	143.3	42.7	186.0	2 348.3	1 358.9	3 707.1	7.9	63.3
August	1 587.9	2 161.1	137.8	47.5	185.4	2 346.4	1 364.6	3 711.0	7.9	63.2
September	1 608.6	2 194.1	146.2	50.4	196.6	2 390.7	1 324.2	3 714.9	8.2	64.4
October	1 593.0	2 161.1	128.7	44.6	173.3	2 334.5	1 385.3	3 719.7	7.4	62.8
November	1 576.6	2 159.8	133.1	41.1	174.2	2 334.1	1 390.5	3 724.5	7.5	62.7
December	1 620.2	2 191.3	129.2	46.3	175.4	2 366.7	1 362.6	3 729.4	7.4	63.5
1999										
January	1 595.0	2 135.2	141.2	41.0	182.2	2 317.4	1 416.1	3 733.5	7.9	62.1
February	1 617.1	2 160.8	149.1	48.3	197.4	2 358.1	1 379.5	3 737.6	8.4	63.1

Source: Labour Force, Victoria (Cat. no. 6202.2) (quarterly).

4

EMPLOYED PERSONS, BY INDUSTRY

	Nov 1997	Feb 1998	May 1998	Aug 1998	Nov 1998	Feb 1999
Industry division	'000	'000	'000	'000	'000	'000
MALES						
Agriculture, forestry and fishing	55.3	67.3	61.7	52.0	51.8	57.9
Mining	*3.3	*3.1	*3.6	*2.2	5.3	*3.8
Manufacturing	251.2	248.3	243.4	247.1	244.3	259.0
Electricity, gas and water supply	10.0	11.7	12.7	13.8	12.0	13.4
Construction	116.5	122.1	128.9	127.2	132.1	125.7
Wholesale trade	88.4	92.7	104.9	99.2	85.8	86.5
Retail trade	158.5	160.2	151.2	152.4	165.1	170.1
Accommodation, cafes and restaurants	37.7	32.2	39.8	41.2	39.9	42.4
Transport and storage	73.7	83.4	79.3	72.6	75.6	78.5
Communication services	22.5	22.2	22.3	25.1	26.4	28.5
Finance and insurance	46.5	42.6	40.3	43.9	50.4	45.4
Property and business services	131.7	131.1	135.6	149.7	148.4	138.3
Government administration and defence	38.4	37.5	36.2	35.9	31.4	28.6
Education	53.1	49.4	50.1	41.4	38.4	40.4
Health and community services	39.9	36.7	40.3	38.4	45.0	46.6
Cultural and recreational services	28.4	28.5	26.6	25.6	26.5	25.1
Personal and other services	42.8	38.5	45.7	39.3	40.3	41.2
Total	1 197.9	1 207.2	1 222.6	1 206.8	1 218.9	1 231.2
FEMALES						
Agriculture, forestry and fishing	30.7	35.1	31.7	26.5	25.3	28.8
Mining	*0.4	*0.3	*0.3	*0.8	*0.2	*0.0
Manufacturing	107.7	95.5	98.4	95.3	91.4	98.3
Electricity, gas and water supply	*2.0	*2.6	*3.0	*3.7	*2.5	*2.7
Construction	15.9	16.6	13.7	17.6	18.2	16.5
Wholesale trade	41.6	39.7	40.8	46.7	40.6	40.2
Retail trade	159.0	161.5	157.5	156.5	161.5	167.6
Accommodation, cafes and restaurants	48.0	46.6	49.2	49.2	49.9	43.8
Transport and storage	18.9	20.0	18.3	16.3	19.7	22.1
Communication services	16.0	14.3	12.5	13.9	13.2	10.9
Finance and insurance	42.2	40.7	48.4	54.9	51.2	45.1
Property and business services	102.2	106.0	108.9	108.4	112.1	108.0
Government administration and defence	42.1	34.2	35.8	40.2	40.5	38.2
Education	89.6	86.4	96.1	94.8	93.3	84.0
Health and community services	149.8	158.6	160.9	158.0	155.4	155.4
Cultural and recreational services	25.3	21.8	26.2	28.4	28.2	26.2
Personal and other services	35.1	38.0	37.2	42.8	37.8	41.5
Total	926.5	917.9	939.0	954.2	941.0	929.5
PERSONS						
Agriculture, forestry and fishing	86.0	102.4	93.4	78.5	77.1	86.6
Mining	*3.6	*3.4	*3.9	*3.1	5.6	*3.8
Manufacturing	358.9	343.8	341.8	342.4	335.8	357.4
Electricity, gas and water supply	11.9	14.3	15.7	17.6	14.5	16.2
Construction	132.4	138.7	142.5	144.8	150.3	142.2
Wholesale trade	130.0	132.4	145.7	145.9	126.4	126.7
Retail trade	317.6	321.7	308.7	308.9	326.6	337.6
Accommodation, cafes and restaurants	85.8	78.8	89.1	90.4	89.8	86.3
Transport and storage	92.6	103.4	97.6	88.9	95.3	100.6
Communication services	38.5	36.5	34.8	39.0	39.6	39.4
Finance and insurance	88.8	83.3	88.7	98.7	101.6	90.5
Property and business services	233.9	237.0	244.5	258.1	260.5	246.3
Government administration and defence	80.4	71.7	72.0	76.1	72.0	66.8
Education	142.8	135.7	146.2	136.2	131.7	124.4
Health and community services	189.7	195.2	201.3	196.4	200.4	202.0
Cultural and recreational services	53.7	50.2	52.8	54.0	54.6	51.4
Personal and other services	78.0	76.5	82.9	82.1	78.0	82.8
Total	2 124.4	2 125.1	2 161.6	2 161.1	2 159.8	2 160.8

Source: Labour Force, Victoria (Cat. no. 6202.2) (quarterly).

5

JOB VACANCIES

Month	Vacancies all persons '000	Industry		Sector		Job vacancy rate %
		Manufacturing	Other	Public	Private	
		'000	'000	'000	'000	
1997						
November	*17.9	1.1	*16.8	2.3	*15.6	*0.97
1998						
February	24.0	*2.5	21.5	1.8	*22.1	1.20
May	20.2	2.2	18.0	1.5	18.7	1.00
August	17.6	0.8	16.8	1.9	15.7	0.84
November	26.9	*1.2	*25.7	1.9	25.0	1.30
1999						
February	12.5	*1.0	*11.5	*2.4	10.2	0.61

Source: Job Vacancies and Overtime, Australia (Cat. no. 6354.0) (quarterly); Unpublished data, Quarterly Survey of Job Vacancies and Overtime.

6

INDUSTRIAL DISPUTES CAUSING STOPPAGE OF WORK

Month	Disputes		Employees involved				Working days lost		
	Beginning in period	Total	Beginning in period	Total	Manufacturing	Construction	Education, health, community services	Other industries	Total
	no.	no.	'000	'000	'000	'000	'000	'000	'000
1997									
October	10	12	52.8	53.7	33.7	18.6	1.2	6.6	60.1
November	8	13	22.1	46.6	18.9	10.4	14.8	2.0	46.0
December	6	11	4.0	17.2	9.4	3.7	—	4.2	17.3
1998									
January	5	7	0.5	1.1	0.9	0.3	—	0.3	1.5
February	8	10	17.2	17.6	7.8	1.3	14.3	4.0	27.4
March	6	11	5.7	14.1	5.4	14.7	4.4	0.5	25.0
April	11	17	6.3	9.1	2.6	4.0	0.5	0.7	7.8
May	5	7	42.1	55.7	15.1	23.1	13.9	1.3	53.4
June	8	10	3.0	19.5	0.2	17.7	—	0.4	18.3
July	14	18	3.5	4.3	5.3	0.7	0.1	0.1	6.1
August	14	15	12.3	12.5	0.3	2.9	2.0	6.7	11.9
September	19	22	14.0	16.0	12.4	5.3	2.3	1.8	21.8
October	11	12	1.9	1.9	1.4	1.0	—	1.4	3.8
November	15	16	12.7	12.8	3.9	0.3	10.0	3.3	17.4
December	17	20	3.0	4.6	2.7	1.4	—	1.3	5.4

Source: Industrial Disputes, Australia (Cat. no. 6321.0) (monthly).

7

AVERAGE WEEKLY EARNINGS OF EMPLOYEES

Month	Males			Females			Persons		
	Full-time adult ordinary time earnings	Full-time adult total earnings	All males total earnings	Full-time adult ordinary time earnings	Full-time adult total earnings	All females total earnings	Full-time adult ordinary time earnings	Full-time adult total earnings	All employees total earnings
	\$	\$	\$	\$	\$	\$	\$	\$	\$
1997									
August	754.20	812.70	695.20	625.80	643.40	460.40	708.10	751.90	587.20
November	748.50	807.60	714.90	632.90	653.10	463.60	708.10	753.60	600.60
1998									
February	762.20	823.10	722.00	634.90	650.70	477.70	716.80	761.60	610.40
May	767.60	825.30	701.50	646.30	660.40	470.40	724.80	767.00	596.30
August	770.90	826.30	704.30	650.20	662.70	475.60	728.00	768.20	600.90
November	781.80	842.10	716.80	657.40	673.30	473.90	736.30	780.30	602.40

Source: Average Weekly Earnings, States and Australia (Cat. no. 6302.0) (quarterly).

8

CONSUMER PRICE INDEX—MELBOURNE

Melbourne

<i>Period</i>	<i>Food</i>	<i>Clothing</i>	<i>Housing</i>	<i>Household equipment and operation</i>	<i>Transportation</i>	<i>Tobacco and alcohol</i>	<i>Health and personal care</i>	<i>Recreation and education</i>	<i>All groups</i>	<i>Weighted average of eight capital cities—All groups</i>
1995–96	114.1	108.0	101.4	113.0	122.6	154.2	148.7	120.3	118.4	118.7
1996–97	118.6	108.4	95.0	114.7	124.0	158.5	157.1	123.3	119.9	120.3
1997–98	120.5	108.9	86.5	115.0	123.3	161.4	162.2	127.6	119.8	120.3
1997										
September qtr	119.8	108.5	88.7	114.6	124.6	158.6	157.3	126.0	119.5	119.7
December qtr	119.7	109.2	86.9	115.4	124.4	161.2	162.2	126.2	119.8	120.0
1998										
March qtr	120.7	109.0	84.1	115.1	122.1	162.0	163.6	129.4	119.6	120.3
June qtr	121.6	108.9	86.2	115.1	122.0	163.9	165.8	128.8	120.3	121.0
September qtr	123.6	108.9	85.3	115.3	121.0	165.0	166.7	128.4	120.4	121.3
December qtr	124.3	108.2	86.6	115.3	120.6	166.0	165.3	129.0	120.8	121.9

Base of each group: year 1989–90=100.0

Source: Consumer Price Index (Cat. no. 6401.0) (quarterly).

9

PRICE INDEX OF MATERIALS USED IN BUILDING—MELBOURNE

1998

<i>Group</i>	<i>1995–96</i>	<i>1996–97</i>	<i>1997–98</i>	<i>Jun qtr</i>	<i>Sep qtr</i>	<i>Dec qtr</i>	<i>Weighted average of six state capital cities—Dec qtr 1998</i>
House building							
All groups	115.4	115.3	117.1	118.0	118.6	118.1	119.7
Other than house building							
Structural timber	116.1	110.1	115.6	116.8	118.3	117.7	126.2
Clay bricks	112.1	113.1	117.9	119.7	119.7	119.6	118.4
Ready mix concrete	118.6	111.5	111.4	111.3	112.4	113.5	106.6
Precast concrete products	108.1	110.3	115.7	123.5	123.6	122.6	123.3
Steel decking and cladding	109.9	109.2	109.4	108.3	108.3	108.3	114.5
Structural steel	100.9	104.2	104.9	104.8	104.8	104.8	113.2
Reinforcing steel bar, mesh, etc.	102.7	100.7	100.8	100.8	100.3	99.9	110.6
Aluminium windows	100.8	100.6	100.0	99.7	99.7	100.0	110.5
Fabricated steel products	113.1	116.7	120.0	120.6	124.6	124.6	117.6
Builders' hardware	114.5	116.5	119.6	120.3	121.4	122.2	122.9
Sand and aggregate	114.6	115.9	116.3	116.4	119.6	119.6	121.7
Carpet	101.6	101.6	102.6	101.5	101.9	99.9	102.5
Paint and other coatings	141.2	145.8	144.7	148.3	148.6	155.0	143.2
Non-ferrous pipes and fittings	112.2	111.5	113.0	109.4	109.4	111.8	126.7
All groups excluding electrical materials and mechanical services	109.7	110.0	111.0	111.5	112.0	112.3	114.5
All electrical materials	119.4	112.0	109.8	108.6	108.6	111.8	116.8
All mechanical services	114.1	115.0	114.9	115.2	116.2	118.4	117.9
All plumbing materials	118.9	120.1	122.8	122.3	123.0	123.0	125.4
All groups	111.1	110.9	111.4	111.8	112.4	113.2	115.2

Base of each index: year 1989–90=100.0.

Source: Price Index of Materials Used in Building Other Than House Building, Six State Capital Cities (Cat. no. 6407.0) (quarterly). Price Index of Materials Used in House Building, Six State Capital Cities (Cat. no. 6408.0) (quarterly).

10

LIVESTOCK SLAUGHTERINGS

Period	Cattle	Calves	Sheep	Lambs	Pigs r
	'000	'000	'000	'000	'000
1995-96	1 523.6	589.8	2 488.0	5 897.7	1 335.5
1996-97	1 675.9	697.3	2 806.6	5 978.9	1 397.2
1997-98 r	1 797.2	769.9	3 323.3	6 340.3	1 567.7
1997					
December	163.9	11.8	340.5	583.1	136.7
1998					
January	165.3	11.1	339.3	539.2	121.3
February r	159.4	8.3	367.2	525.7	117.1
March	159.4	21.2	365.5	506.8	134.0
April	163.2	33.7	268.6	547.4	140.3
May	141.2	41.9	183.5	478.4	144.0
June	146.9	64.4	203.1	481.0	149.6
July	156.2	106.4	219.8	581.4	157.1
August	122.6	164.1	190.5	538.7	134.6
September	141.1	174.3	216.0	619.2	135.4
October	157.0	97.3	258.6	561.8	131.1
November	155.9	21.8	271.8	590.8	129.7
December	r 155.2	10.7	227.0	595.6	143.3
1999					
January r	156.1	6.5	254.8	555.1	102.8
February	161.3	7.0	342.3	533.9	110.9

Source: Livestock Products, Australia (Cat. no. 7215.0) (monthly prior to July 1998 and quarterly from September 1998); Unpublished data, Monthly Livestock Collection.

11

MEAT PRODUCTION

Period	Meat (carcass weight)				
	Beef	Veal	Mutton	Lamb	Pigmeat r
	tonnes	tonnes	tonnes	tonnes	tonnes
1995-96	348 649	12 009	50 910	110 172	96 195
1996-97	r 373 819	14 293	55 545	111 403	99 226
1997-98 r	388 959	15 627	64 392	118 922	112 504
1997					
December	35 616	286	6 861	11 001	9 442
1998					
January	35 728	281	6 505	10 135	8 634
February r	35 579	205	6 907	10 039	8 064
March	35 112	453	6 995	9 348	9 588
April	34 408	705	4 872	10 294	10 135
May	30 084	839	3 500	9 114	10 383
June	31 220	1 318	3 873	9 063	11 038
July	34 634	2 035	4 318	11 151	11 560
August	27 301	3 230	3 785	10 331	9 732
September	31 548	3 419	4 388	11 911	9 923
October	35 545	1 939	5 390	10 927	9 713
November	35 417	481	5 519	11 604	9 268
December	r 34 872	257	4 625	10 177	9 751
1999					
January r	35 471	171	5 147	10 578	7 449
February	36 682	177	6 621	10 340	8 032

Source: Livestock Products, Australia (Cat. no. 7215.0) (monthly prior to July 1998 and quarterly from September 1998); Unpublished data, Monthly Livestock Collection.

Period	<i>New dwelling units(a)</i>							<i>Non-residential building(b)</i>				
	<i>Private sector</i>		<i>Public sector</i>		<i>Total(c)</i>			Alterations and additions to residential buildings	<i>Private sector</i>		Total all buildings	
	no.	\$m	no.	\$m	no.	\$m	no.		\$m	\$m		
MELBOURNE STATISTICAL DIVISION												
1995-96	15 676	1 624.3	1 068	86.5	16 744	1 710.8	617	467.2	1 352.5	1 934.5	4 112.5	
1996-97	19 670	2 185.2	447	35.7	20 117	2 221.0	1 189	592.3	1 527.1	2 303.0	5 116.2	
1997-98	26 490	3 026.5	723	56.0	27 213	3 082.6	1 029	701.2	2 168.2	2 593.0	6 376.8	
1997												
December	2 072	232.1	71	6.1	2 143	238.2	60	43.6	440.7	450.6	732.3	
1998												
January	1 854	230.6	23	1.5	1 877	232.1	74	44.2	174.2	203.1	479.4	
February	2 032	219.7	25	2.0	2 057	221.7	65	56.1	137.7	165.8	443.5	
March	2 633	288.4	11	0.7	2 644	289.1	77	69.3	104.0	117.6	476.0	
April	2 480	296.4	55	3.7	2 535	300.0	47	66.1	172.9	254.2	620.3	
May	2 246	267.7	122	9.3	2 368	277.0	224	72.9	223.9	265.6	615.5	
June	2 237	279.3	91	7.4	2 328	286.7	64	57.1	110.6	173.9	517.7	
July	2 225	257.0	45	3.0	2 270	260.0	134	62.7	142.1	162.2	484.9	
August	2 376	290.3	51	4.2	2 427	294.5	192	69.5	314.2	335.2	699.2	
September	2 334	282.3	33	2.3	2 367	284.7	77	66.7	192.7	246.1	597.5	
October	2 286	300.4	74	5.0	2 360	305.4	51	69.6	216.5	457.2	832.3	
November	2 279	286.7	57	3.7	2 336	290.4	351	76.2	179.5	236.0	602.6	
December	2 398	290.1	54	5.7	2 452	295.8	145	60.5	107.1	133.7	490.1	
1999												
January	1 621	200.3	125	8.8	1 746	209.1	22	41.6	87.9	153.8	404.5	
February	2 594	316.5	51	3.1	2 645	319.6	143	61.7	109.3	206.7	588.0	
TOTAL VICTORIA												
1995-96	21 643	2 171.1	1 401	108.7	23 044	2 279.7	663	590.1	1 721.6	2 452.4	5 322.3	
1996-97	26 014	2 793.3	596	46.7	26 610	2 839.9	1 240	728.5	1 879.7	2 839.8	6 408.2	
1997-98	34 178	3 811.3	1 171	88.6	35 349	3 899.8	1 089	858.5	2 476.9	3 064.5	7 822.8	
1997												
December	2 675	293.5	90	7.9	2 765	301.4	65	55.6	456.7	470.2	827.2	
1998												
January	2 305	278.0	57	3.7	2 362	281.7	77	56.7	201.7	234.1	572.6	
February	2 620	278.5	71	6.0	2 691	284.5	66	67.3	158.3	222.6	574.5	
March	3 413	369.6	49	3.4	3 462	373.0	84	83.1	129.9	148.5	604.6	
April	3 154	363.8	110	7.2	3 264	371.0	49	77.8	201.2	302.7	751.5	
May	2 942	341.0	159	12.6	3 101	353.6	255	89.9	243.4	292.3	735.7	
June	3 010	359.2	179	13.8	3 189	373.0	66	71.3	136.4	213.0	657.3	
July	2 850	321.5	75	4.8	2 925	326.3	138	72.9	174.0	196.7	595.9	
August	3 000	355.6	67	5.3	3 067	360.9	196	78.6	340.5	366.4	806.0	
September	3 192	372.8	48	3.4	3 240	376.2	85	80.7	230.6	302.2	759.0	
October	2 921	368.0	103	7.2	3 024	375.3	55	85.0	242.2	491.2	951.4	
November	2 991	362.4	91	6.5	3 082	368.9	357	90.5	204.2	267.9	727.2	
December	2 955	348.6	61	6.3	3 016	354.9	159	70.2	136.2	177.4	602.4	
1999												
January	2 210	264.0	155	10.9	2 365	274.9	23	52.4	111.6	184.6	511.8	
February	3 288	394.9	83	5.5	3 371	400.4	146	74.9	129.8	255.7	731.1	

(a) Valued at \$10,000 and over.

(b) Valued at \$50,000 and over.

(c) Excludes dwelling units created as a result of conversions or construction of non-residential buildings.

(d) Dwelling units created as a result of conversions or construction of non-residential buildings.

Source: Building Approvals, Victoria (Cat. no. 8731.2) (monthly).

Period	New houses				New other residential buildings			
	Approved	Commenced	Under Construction	Completed	Approved	Commenced	Under Construction	Completed
	no.	no.	no.	no.	no.	no.	no.	no.
1995-96	18 889	19 399	8 066	21 883	4 155	4 276	3 906	3 086
1996-97	19 805	18 652	8 937	17 613	6 805	6 047	4 151	5 727
1997-98	27 937	25 947	12 503	22 271	7 412	7 509	5 095	6 497
1997								
June qtr	5 794	5 463	8 937	4 687	1 531	1 527	4 151	1 400
September qtr	6 732	5 717	9 537	5 102	1 973	1 822	3 874	2 036
December qtr	6 821	7 088	10 720	5 842	1 754	1 958	4 104	1 725
1998								
March qtr	6 577	6 034	11 512	5 242	1 938	1 924	4 806	1 220
June qtr	7 807	7 165	12 368	6 239	1 747	1 894	5 148	1 561
September qtr	7 526	7 288	12 835	6 803	1 706	1 922	5 348	1 679

Source: Building Activity, Victoria (Cat. no. 8752.2) (quarterly).

Period	Residential buildings			Non-residential buildings					Total
	New	Alterations and additions	Shops	Factories	Offices	Education	Health	Other	
	\$m	\$m	\$m	\$m	\$m	\$m	\$m	\$m	
COMMENCED									
1995-96	2 486.2	679.7	444.3	249.2	393.5	330.0	108.4	953.5	5 644.8
1996-97	2 692.2	761.0	348.2	343.8	508.5	410.3	303.6	1 003.3	6 371.1
1997-98	3 850.5	891.1	598.5	241.8	428.6	270.9	250.2	1 399.8	7 931.4
1997									
June qtr	789.7	235.0	97.2	74.4	104.3	214.1	103.4	369.6	1 987.6
September qtr	845.8	228.4	80.4	58.3	123.8	55.2	46.1	245.8	1 683.7
December qtr	1 050.3	223.9	124.6	84.3	93.8	70.6	93.9	601.3	2 342.4
1998									
March qtr	870.9	187.0	134.1	54.1	91.8	65.7	42.6	327.7	1 774.0
June qtr	1 083.5	251.9	259.4	45.0	119.2	79.4	67.7	225.2	2 131.3
September qtr	1 086.1	218.9	86.0	54.7	99.1	124.7	24.9	206.5	1 901.1
UNDER CONSTRUCTION AT END OF PERIOD									
1995-96	1 472.5	339.4	235.5	141.4	139.2	248.1	123.9	1 390.9	4 091.0
1996-97	1 582.3	358.5	284.6	214.9	233.4	310.0	236.2	1 741.7	4 961.6
1997-98	2 274.1	412.4	406.6	141.9	241.6	320.2	279.8	1 466.0	5 542.6
1997									
June qtr	1 582.3	358.5	284.6	214.9	233.4	310.0	236.2	1 741.7	4 961.6
September qtr	1 669.2	388.8	175.4	167.4	193.9	343.2	245.6	920.7	4 104.1
December qtr	1 836.8	399.4	185.5	160.1	195.5	365.7	303.5	1 304.1	4 750.6
1998									
March qtr	2 040.0	366.6	210.4	157.6	208.5	307.4	244.8	1 442.2	4 977.5
June qtr	2 274.1	412.4	406.6	141.9	241.6	320.2	279.8	1 466.0	5 542.6
September qtr	2 407.0	417.5	437.1	127.8	249.1	412.4	210.5	1 485.9	5 747.3
COMPLETED									
1995-96	2 489.6	689.0	715.1	249.9	514.1	302.2	234.7	844.4	6 038.9
1996-97	2 617.6	768.5	364.8	295.6	404.0	342.0	194.6	1 106.7	6 093.8
1997-98	3 213.6	866.6	474.7	338.4	449.4	283.2	208.2	1 738.4	7 572.4
1997									
June qtr	684.7	195.3	52.0	86.5	104.6	95.0	41.5	439.9	1 699.5
September qtr	775.5	202.9	193.1	114.5	169.9	30.8	39.6	1 101.1	2 627.5
December qtr	886.3	219.3	114.6	94.8	102.1	53.7	39.3	236.9	1 747.1
1998									
March qtr	681.2	227.7	99.6	61.9	85.6	131.1	96.8	201.6	1 585.7
June qtr	870.5	216.7	67.4	67.2	91.8	67.6	32.4	198.6	1 612.1
September qtr	980.4	227.5	87.6	73.7	94.4	33.3	101.7	207.3	1 805.9

Source: Building Activity, Victoria (Cat. no. 8752.2) (quarterly).

15

PRIVATE NEW CAPITAL EXPENDITURE, BY SELECTED INDUSTRIES AND TYPE OF ASSET

Period	Selected industries				Type of asset	
	Mining	Manufacturing	Other selected industries	Total	New buildings and structures	Equipment, plant and machinery
	\$m	\$m	\$m	\$m	\$m	\$m
ACTUAL						
1996-97	758	3 447	7 290	11 496	3 379	8 117
1997-98 r	833	3 401	6 810	11 044	2 859	8 186
1997						
December qtr	295	906	1 898	3 099	784	2 314
1998						
March qtr	163	756	1 527	2 446	615	1 831
June qtr	212	965	1 822	r 2 998	765	r 2 233
September qtr r	319	723	1 834	2 876	861	2 015
December qtr	288	780	1 907	2 975	813	2 162
EXPECTED						
1998-99 r	1 340	3 362	7 060	11 761	3 460	8 301
1999-2000	631	3 008	4 587	8 227	1 754	6 473

Source: State Estimates of Private New Capital Expenditure (Cat. no. 5646.0) (quarterly).

16

COMMERCIAL FINANCE COMMITMENTS

Month	Fixed loan facilities						Type of lender			
	Construction	Purchase of real property	Purchase of plant and equipment	Wholesale	Other	Total	Revolving credit facilities	Total commitments	Banks	All other lenders
	\$m	\$m	\$m	\$m	\$m	\$m	\$m	\$m	\$m	\$m
1997										
November	77.4	463.8	138.3	81.2	525.1	1 285.9	1 475.9	2 761.9	2 279.0	482.9
December	167.1	539.6	164.7	123.8	1 729.9	2 725.0	1 862.3	4 587.3	3 996.0	591.3
1998										
January	76.8	483.4	121.9	83.1	372.7	1 137.8	1 359.6	2 497.4	2 154.8	342.6
February	116.4	425.5	119.7	118.4	722.3	1 502.3	2 150.7	3 653.0	2 757.5	895.5
March	220.0	446.7	161.1	91.2	505.5	1 424.6	1 773.0	3 197.7	2 508.2	689.5
April	75.1	418.1	121.5	90.5	744.2	1 449.3	2 033.0	3 482.4	2 496.7	985.6
May	124.6	489.7	117.5	157.3	1 263.6	2 152.7	1 592.5	3 745.2	3 129.8	615.4
June	100.3	628.8	140.0	115.5	1 154.9	2 139.5	1 440.2	3 579.8	3 085.4	494.4
July	112.8	527.1	156.0	100.2	1 112.3	2 008.4	2 243.1	4 251.5	3 570.6	680.9
August	87.4	391.1	113.9	169.3	451.3	1 212.9	2 182.6	3 395.5	2 912.4	483.1
September	113.1	461.6	185.7	78.8	714.5	1 553.6	1 488.9	3 042.5	2 438.7	603.8
October	85.2	461.3	181.2	91.0	441.0	1 259.8	2 389.8	3 649.6	2 889.9	759.7
November	184.9	456.8	187.8	110.6	1 020.7	1 960.9	1 394.7	3 355.6	2 857.4	498.2
December	68.8	477.2	212.0	328.4	946.1	2 032.5	r 2 742.8	r 4 775.4	3 681.9	r 1 093.5
1999										
January	39.6	364.4	141.0	97.2	456.8	1 099.1	1 202.7	2 301.8	2 096.6	205.3

Source: ABS Time Series Service (AUSSTATS).

17

SECURED HOUSING FINANCE COMMITMENTS, DWELLING UNITS

Month	Original series		Seasonally adjusted		Trend estimates	
	no.	\$m	no.	\$m	no.	\$m
1997						
November	9 583	1 019	10 212	1 084	10 088	1 068
December	10 192	1 090	10 095	1 068	10 089	1 068
1998						
January	8 187	878	9 998	1 064	10 053	1 063
February	9 961	1 028	10 141	1 069	10 026	1 058
March	10 197	1 080	9 846	1 035	10 029	1 057
April	9 780	1 011	9 875	1 035	10 025	1 058
May	9 986	1 063	10 019	1 062	9 977	1 056
June	11 123	1 183	10 355	1 098	9 887	1 053
July	10 629	1 155	9 819	1 067	r 9 760	r 1 046
August	9 249	1 013	9 311	1 014	r 9 646	r 1 045
September	9 637	1 041	9 418	1 021	r 9 589	r 1 054
October	9 649	1 060	9 438	1 046	r 9 608	r 1 075
November	9 513	1 109	10 027	1 129	r 9 692	r 1 106
December	9 860	1 160	9 646	1 145	r 9 798	r 1 140
1999						
January	7 950	963	10 176	1 221	9 938	1 175

Source: Housing Finance for Owner Occupation, Australia (Cat. no. 5609.0) (monthly).

18

RETAIL TURNOVER, BY INDUSTRY (EXCLUDING MOTOR VEHICLES, PARTS, PETROL, ETC.)

Month	Food retailing	Department stores	Clothing and soft good retailing	Household good retailing	Recreational good retailing	Other retailing	Hospitality and services	Total
	\$m	\$m	\$m	\$m	\$m	\$m	\$m	\$m
1997								
December	1 256.5	465.3	245.5	482.2	250.5	383.4	371.9	3 455.3
1998								
January	1 128.9	214.2	155.6	320.1	158.6	254.7	339.4	2 571.5
February	1 022.6	174.2	134.6	280.6	142.7	236.5	297.0	2 288.3
March	1 085.9	208.9	163.8	300.6	150.8	272.9	339.1	2 522.0
April	1 079.1	246.6	189.2	288.6	139.6	281.7	340.2	2 565.1
May	1 093.9	238.9	198.6	304.9	137.6	271.5	344.5	2 589.8
June	1 054.9	211.7	183.6	298.0	135.8	264.8	324.3	2 473.1
July	1 144.1	255.2	200.4	312.9	151.8	284.7	348.5	2 697.6
August	1 118.3	213.4	180.8	303.6	161.5	283.8	357.3	2 618.6
September	1 113.8	228.5	184.4	319.7	167.9	288.7	356.8	2 659.9
October	1 201.4	251.6	193.4	339.5	166.8	315.9	372.5	2 841.2
November	1 158.7	285.6	210.9	323.9	176.9	325.3	367.9	2 849.2
December	1 357.4	499.9	313.1	432.2	260.1	431.1	419.0	3 712.9
1999								
January	1 210.5	227.9	187.8	329.5	r 167.8	275.3	386.5	r 2 785.4
February	1 104.6	186.7	166.5	299.9	147.5	270.2	368.7	2 544.0

Source: Retail Trade, Australia (Cat. no. 8501.0) (monthly).

19

EXPORTS AND IMPORTS, BY SECTIONS OF THE AUSTRALIAN EXPORT AND IMPORT CLASSIFICATIONS

Section	1997-98		8 months ending February 1999	
	Imports	Exports	Imports	Exports
	\$m	\$m	\$m	\$m
0 Food and live animals chiefly for food	1 171	3 604	883	2 613
1 Beverages and tobacco	127	159	89	110
2 Crude materials, inedible (except fuels)	566	1 867	392	972
3 Mineral fuels, lubricants, and related materials	783	938	732	453
4 Animal and vegetable oils, fats and waxes	92	111	69	75
5 Chemicals and related products, n.e.c.	2 958	915	2 112	625
6 Manufacturing goods classified chiefly by material	4 311	2 368	3 041	1 570
7 Machinery and transport equipment	12 438	2 970	8 918	1 943
8 Miscellaneous manufactured articles	5 008	977	3 722	680
9 Commodities and transactions of merchandise trade, n.e.c.	1 397	2 026	890	1 910
Total	28 851	15 935	20 848	10 951

Source: Foreign Trade Australia: Fasttraccs Database.

20

OVERSEAS TRADE, MAJOR TRADING PARTNERS(a)

Country	1996-97		1997-98		8 months ending February 1999	
	Imports	Exports	Imports	Exports	Imports	Exports
	\$m	\$m	\$m	\$m	\$m	\$m
Belgium-Luxembourg	242	66	243	91	160	65
Brazil	125	81	134	76	78	34
Canada	394	123	390	122	248	78
China	1 755	658	2 154	624	1 813	388
Fiji	119	236	133	245	119	145
Finland	169	8	193	12	121	6
France	711	162	631	168	409	89
Germany	1 923	280	2 116	268	1 559	283
Hong Kong	267	812	338	1 073	330	608
India	231	239	256	188	182	124
Indonesia	507	428	637	325	756	141
Italy	832	320	963	396	725	202
Japan	3 097	1 523	3 847	1 683	2 721	1 175
Korea, Republic of	671	2 098	882	1 039	544	491
Malaysia	508	669	668	517	577	273
Mexico	64	52	80	77	61	73
Netherlands	237	39	254	81	204	82
New Zealand	1 247	2 140	1 311	1 552	859	1 075
Pakistan	75	55	97	87	60	21
Papua New Guinea	232	269	163	235	36	129
Philippines	108	372	135	388	108	255
Saudi Arabia	203	168	107	210	58	159
Singapore	468	893	492	989	329	557
South Africa	100	292	147	272	83	145
Sweden	502	65	585	41	370	16
Switzerland	241	66	277	24	221	20
Taiwan	792	696	852	657	627	614
Thailand	335	412	400	341	342	225
United Kingdom	1 635	416	1 694	453	1 252	992
United States of America	5 944	958	7 027	1 603	4 649	933
Other and unknown	1 359	1 710	1 645	2 098	1 250	1 551
Total	25 093	16 306	28 851	15 935	20 851	10 949

(a) The list of countries in this table reflects the volume of trade with Victoria. Information about Victoria's trade with other countries is available on request.

Source: Overseas Trade: Fasttraccs Database.

21

VALUE OF OVERSEAS TRADE—VICTORIA AND AUSTRALIA

Period	Victoria			Australia		
	Imports	Exports	Excess of exports	Imports	Exports (including re-exports)	Excess of exports
	\$m	\$m	\$m	\$m	\$m	\$m
1995-96	24 663	15 410	-9 253	77 792	76 005	-1 787
1996-97	25 093	16 306	-8 787	78 998	78 932	-66
1997-98	28 851	15 935	-12 916	90 684	87 776	-2 908
1997						
November	2 263	1 541	-722	7 184	7 635	451
December	2 425	1 509	-916	7 915	7 822	-93
1998						
January	2 268	1 093	-1 175	7 109	6 303	-806
February	2 294	1 377	-917	6 956	6 673	-283
March	2 618	1 357	-1 261	8 188	7 312	-876
April	2 367	1 212	-1 155	7 446	7 198	-248
May	2 391	1 402	-989	7 657	7 949	292
June	2 657	1 209	-1 448	8 466	7 733	-733
July	2 841	1 379	-1 462	8 905	7 471	-1 434
August	2 669	1 541	-1 128	8 145	7 749	-396
September	2 771	1 430	-1 341	8 545	7 601	-944
October	2 871	1 450	-1 421	9 003	7 819	-1 184
November	2 552	1 313	-1 239	8 536	7 287	-1 249
December	2 570	1 433	-1 137	7 885	7 891	6
1999						
January	2 302	1 201	-1 101	7 235	6 302	-933
February	2 274	1 203	-1 071	7 117	6 260	-857

Source: Overseas Trade: Fastraccs Database.

22

TOURIST ACCOMMODATION

Quarter ended	Hotels, motels, guest houses and serviced apartments(a)						
	Establishments	Guest rooms	Bed spaces	Room nights occupied	Room occupancy rate	Persons employed	Takings from accommodation
	no.	no.	no.	'000	%	no.	\$'000
1997							
September	663	27 476	76 123	1 410.1	55.8	22 746	160 195
December	661	27 616	76 010	1 484.0	58.4	21 478	164 141
1998							
March	668	28 603	77 836	1 534.1	60.1	21 322	175 596
June	669	28 850	78 637	1 415.7	53.9	20 754	153 243
September	676	29 404	80 902	1 464.3	54.4	20 776	169 966
December	682	29 717	81 976	1 602.6	58.7	20 813	182 207

(a) Comprising establishments with 15 or more rooms or units.

Source: Tourist Accommodation, Australia (Cat. no. 8635.0) (quarterly).

SELF-HELP ACCESS TO STATISTICS

DIAL-A-STATISTIC For current and historical Consumer Price Index data, call 1902 981 074.
 For the latest figures for National Accounts, Balance of Payments, Labour Force, Average Weekly Earnings, Estimated Resident Population and the Consumer Price Index call 1900 986 400.
 These calls cost 75c per minute.

INTERNET www.abs.gov.au

LIBRARY A range of ABS publications is available from public and tertiary libraries Australia wide. Contact your nearest library to determine whether it has the ABS statistics you require.

WHY NOT SUBSCRIBE?

PHONE +61 1300 366 323

FAX +61 3 9615 7848

CONSULTANCY SERVICES

ABS offers consultancy services on a user pays basis to help you access published and unpublished data. Data that are already published and can be provided within 5 minutes is free of charge. Statistical methodological services are also available. Please contact:

City	By phone	By fax
Canberra	02 6252 6627	02 6207 0282
Sydney	02 9268 4611	02 9268 4668
Melbourne	03 9615 7755	03 9615 7798
Brisbane	07 3222 6351	07 3222 6283
Perth	08 9360 5140	08 9360 5955
Adelaide	08 8237 7400	08 8237 7566
Hobart	03 6222 5800	03 6222 5995
Darwin	08 8943 2111	08 8981 1218

POST Client Services, ABS, PO Box 10, Belconnen ACT 2616

EMAIL client.services@abs.gov.au



2130320003998

ISSN 0158-202X

RRP \$16.00

© Commonwealth of Australia 1999

Produced by the Australian Bureau of Statistics